

1. Application 用途

- ◆ Industrial Power Supply

2. Features 特性

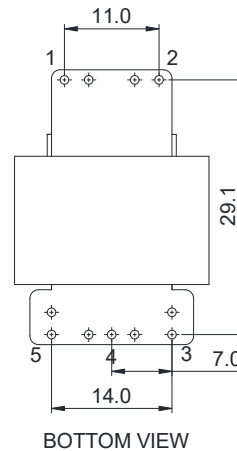
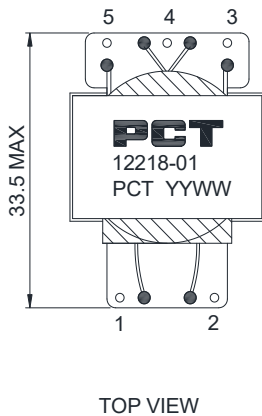
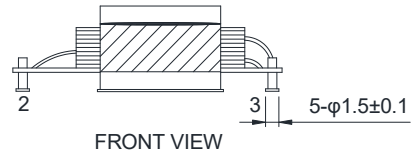
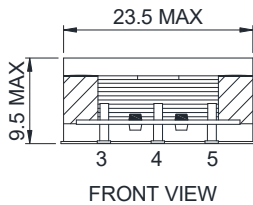
- ◆ Comply with IEC62368
- ◆ $\geq 98\%$ Efficiency
- ◆ ROHS、Reach Compliant
- ◆ Operating Temperature Range: -40°C to $+155^{\circ}\text{C}$

3. Picture 图片



4. Schematic 原理图

5. Dimension (Unit: mm) 外形尺寸



6. Electrical Characteristics 电气特性

Electrical Specifications@25°C									
Part NO.	Output power(W)	Inductance (uH) 100KHz,0.3V	Lk(uH) 100KHz,0.1V	Turns Ratio 20KHz,1V	DCR (mΩ MAX)				HI-POT(VAC) 1mA/3S
12218-01	100	1-2	/	N1:N2:N3	1-2	4-3	5-4	/	PRI-SEC
		363.0 MIN	/	1 :0.54 :0.5 4	50.0	23.0	23.0	/	4500