

1. Application 用途

- ◆ Industrial, Automotive and so on

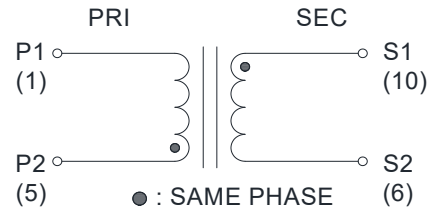
2. Features 特性

- ◆ Multilayer combination and flattened design
- ◆ Comply with AEC-Q200, IEC62368
- ◆ ≥98% Efficiency
- ◆ ROHS、Reach Compliant
- ◆ Operating Temperature Range: -40°C to +155°C

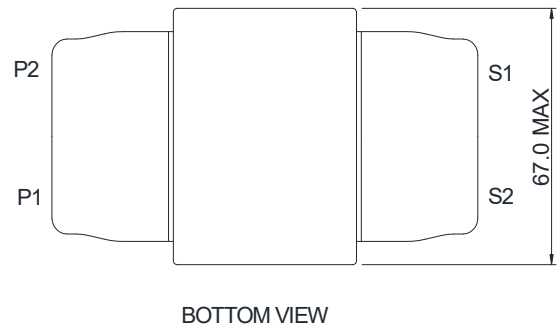
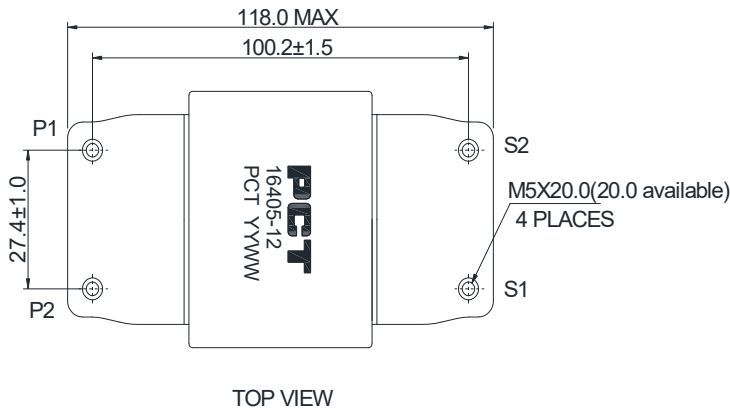
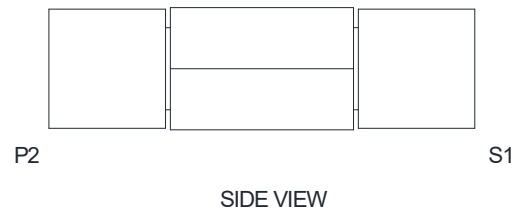
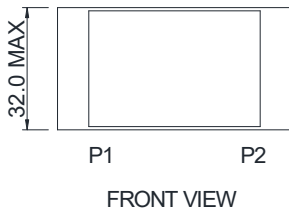
3. Picture 图片



4. Schematic 原理图



5. Dimension (Unit: mm) 外形尺寸



6. Electrical Characteristics 电气特性

Electrical Specifications@25°C									
Part NO.	Output power(W)	Inductance(uH)	Lk(uH)MAX	Turns Ratio	DCR (mΩ MAX)				HI-POT(VAC)
		10KHz,0.5V	100KHz,0.5V		20KHz,1V				
16405-22A	8400	1-5	1-5	1-5:6-10	1-5	6-10	/	/	1- 10
		540.0~660.0	1.0	1 : 0.44	17.0	9.0	/	/	4000