

## 1. Application 用途

- ◆ Automotive Busbar Inductor

## 2. Features 特性

- ◆ High current and flattened design
- ◆ Comply with AEC-Q200
- ◆ ROHS、Reach Compliant
- ◆ Operating Temperature Range: -40°C to +155°C

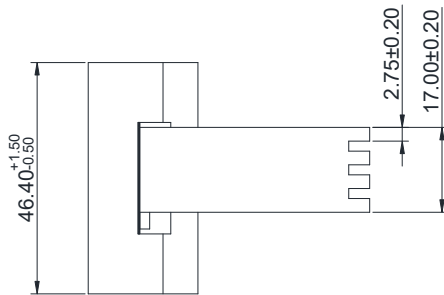
## 3. Picture 图片



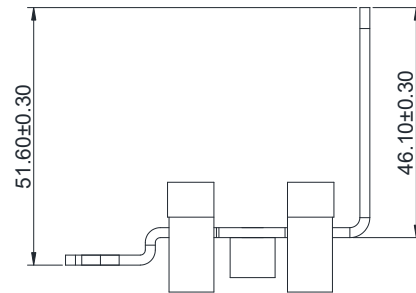
## 4. Schematic 原理图



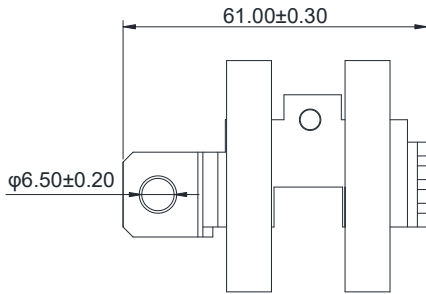
## 5. Dimension (Unit: mm) 外形尺寸



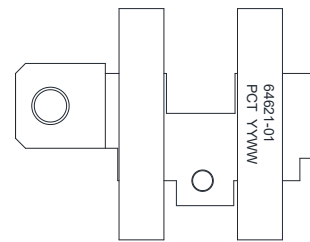
FRONT VIEW



SIDE VIEW



TOP VIEW



BOTTOM VIEW

## 6. Electrical Characteristics 电气特性

Electrical Specifications@25°C

Part NO.	Inductance (mH)		Work Current(A)	Turns Ratio	DCR				HI-POT(VAC)
	100KHz, 1V				(mΩ MAX)				
64621-01	S-F	/	/	N1	/	/	/	/	/
	0.24 MIN	/	320	/	/	/	/	/	/