

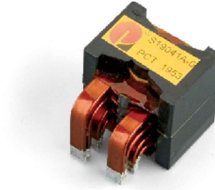
## 1. Application 用途

- ◆ Industrial, New energy and so on

## 2. Features 特性

- ◆ Multilayer combination and flattened design
- ◆ Comply with IEC62368
- ◆  $\geq 98\%$  Efficiency
- ◆ ROHS、Reach Compliant
- ◆ Operating Temperature Range:  $-40^{\circ}\text{C}$  to  $+155^{\circ}\text{C}$

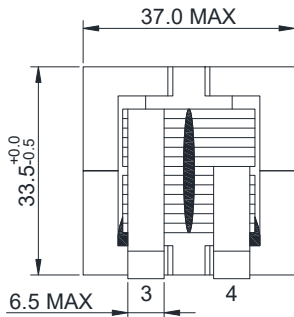
## 3. Picture 图片



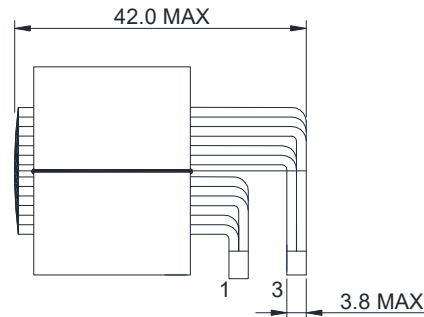
## 4. Schematic 原理图



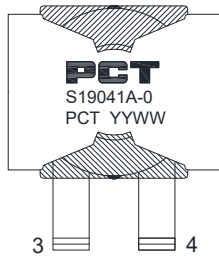
## 5. Dimension (Unit: mm) 外形尺寸



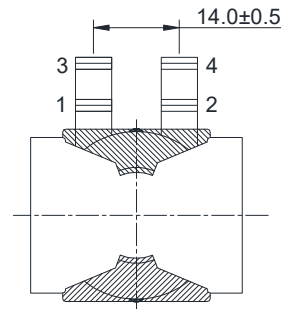
FRONT VIEW



SIDE VIEW



TOP VIEW



BOTTOM VIEW

## 6. Electrical Characteristics 电气特性

Electrical Specifications@25°C

Part NO.	Inductance (uH) 100KHz,0.3V		Lk(uH) 100KHz,0.3V	Turns Ratio 20KHz,1V	DCR (mΩ MAX)				HI-POT(VDC) 1mA/3S
	1-2	3-4	/	N1:N2	1-2	3-4	/	/	N1,N2,CORE
S19041A-0	0.5~0.7	0.5~0.7	/	/	0.3	0.35	/	/	500