

## 1. Application 用途

- ◆ Industrial Power Supply

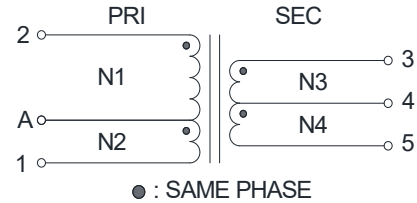
## 2. Features 特性

- ◆ Magnetic integration and flattened design
- ◆ Comply with IEC62368
- ◆ ≥98% Efficiency
- ◆ ROHS、Reach Compliant
- ◆ Operating Temperature Range: -40°C to +155°C

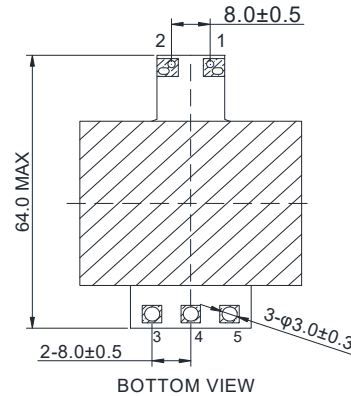
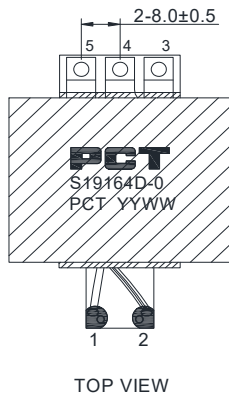
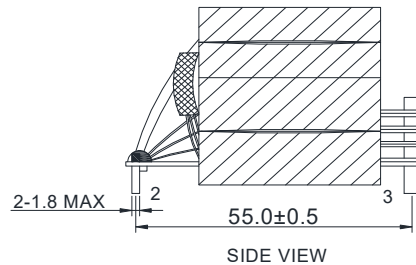
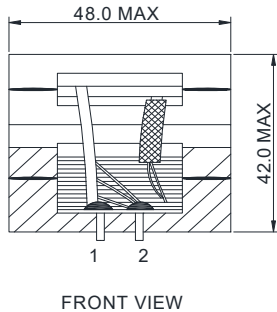
## 3. Picture 图片



## 4. Schematic 原理图



## 5. Dimension (Unit: mm) 外形尺寸



## 6. Electrical Characteristics 电气特性

Electrical Specifications@25°C									
Part NO.	Output power(W)	Inductance (uH) 100KHz, 1V		Lk(uH)MAX 100KHz, 1V	Turns Ratio 20KHz, 1V	DCR (mΩ MAX)			HI-POT(VAC) 1mA/3S
<b>S19164D-0</b>	3000	2-A	A-1	2-A	N1:N2:N3:N4	2-1	3-4	4-5	PRI-SEC
		128.0±8%	19.0±5%	5.0	1:0.666:0.133:0.133	35.0	1.0	1.0	3750