

1. Application 用途

- ◆ Industrial, Automotive and so on

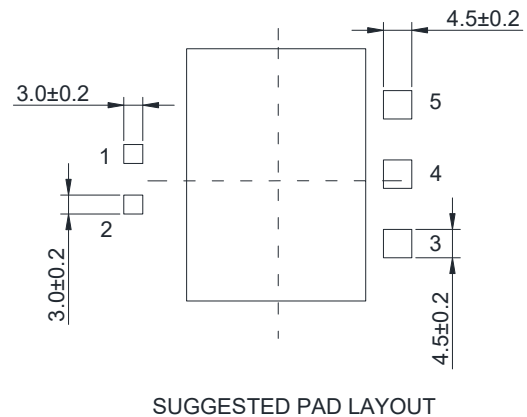
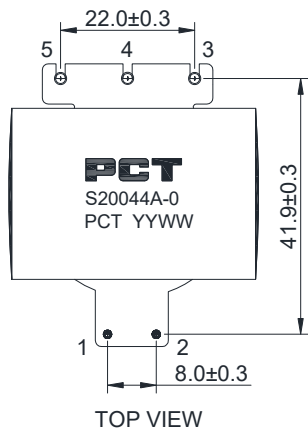
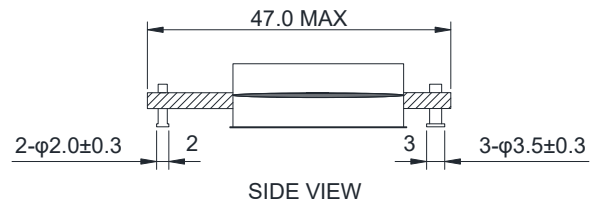
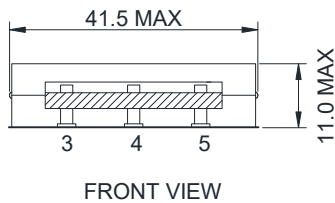
2. Features 特性

- ◆ Comply with AEC-Q200, IEC62368
- ◆ $\geq 98\%$ Efficiency
- ◆ ROHS、Reach Compliant
- ◆ Operating Temperature Range: -40°C to $+155^{\circ}\text{C}$

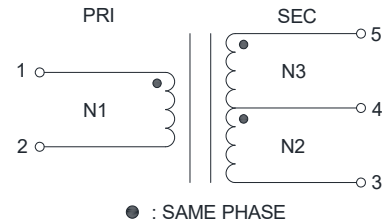
3. Picture 图片



5. Dimension (Unit: mm) 外形尺寸



4. Schematic 原理图



6. Electrical Characteristics 电气特性

Electrical Specifications@25°C									
Part NO.	Output power(W)	Inductance(uH) 100KHz,0.3V	Lk(uH) 100KHz,0.3V	Turns Ratio 20KHz,1V	DCR (mΩ MAX)			HI-POT(VAC) 1mA/60S	
S20044A-0	500	1-2	1-2	N1:N2:N3	1-2	3-4	4-5	/	PRI-SEC
		147.0~173.0	2.0	1:0.08:0.08	68.0	3.0	3.0	/	2200