

1. Application 用途

- ◆ Industrial, Automotive EMC Inductor

2. Features 特性

- ◆ High insulation and special design
- ◆ Comply with AEC-Q200, IEC62368
- ◆ ≥98% Efficiency
- ◆ ROHS、Reach Compliant
- ◆ Operating Temperature Range: -40°C to +155°C

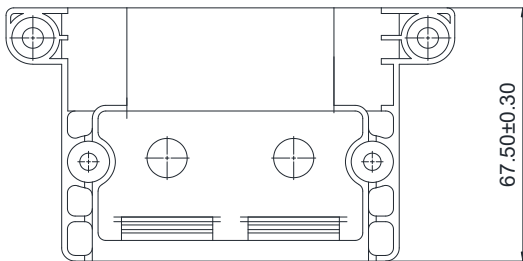
3. Picture 图片



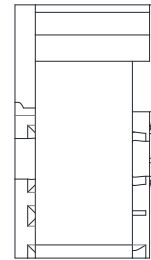
4. Schematic 原理图



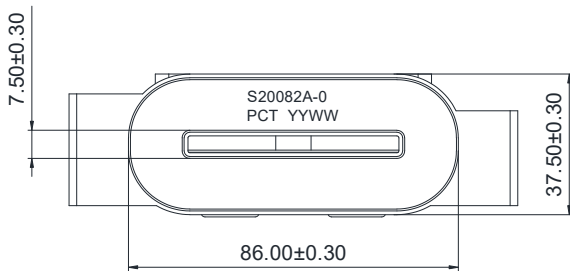
5. Dimension (Unit: mm) 外形尺寸



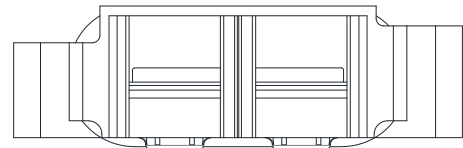
FRONT VIEW



SIDE VIEW



TOP VIEW



BOTTOM VIEW

6. Electrical Characteristics 电气特性

Electrical Specifications@25°C

Part NO.	Inductance (uH)		Lk(uH)	Turns Ratio	DCR				HI-POT(VAC)
	10KHz, 1V		10KHz, 1V	10KHz, 1V	(mΩ MAX)				1mA/3S
S20082A-0	S-F	/	/	/	/	/	/	/	/
	20.0 MIN	/	/	/	/	/	/	/	/