

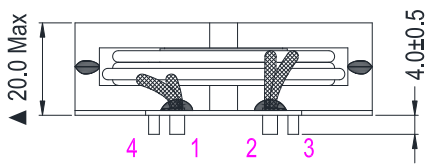
## 1. Application 用途

- ◆ Industrial, Consume and so on

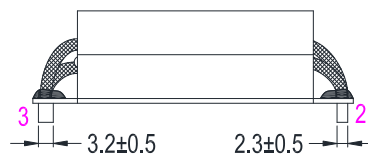
## 2. Features 特性

- ◆ Comply with IEC62368/满足 IEC62368
- ◆  $\geq 98\%$  Efficiency/ $\geq 98\%$  效率
- ◆ ROHS、Reach Compliant/符合ROHS, Reach标准
- ◆ Operating Temperature Range:  $-40^{\circ}\text{C}$  to  $+155^{\circ}\text{C}$   
工作温度:  $-40^{\circ}\text{C}$  to  $+155^{\circ}\text{C}$

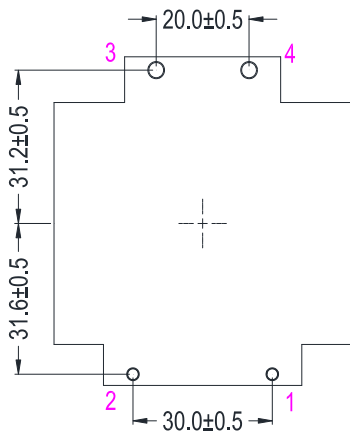
## 5. Dimension (Unit: mm) 外形尺寸



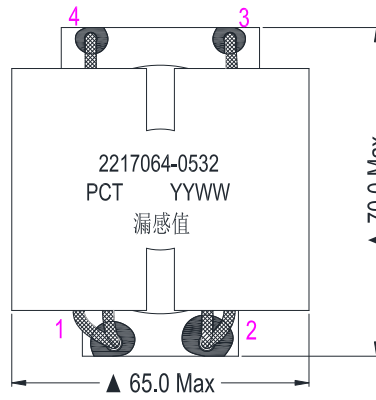
FRONT VIEW



SIDE VIEW

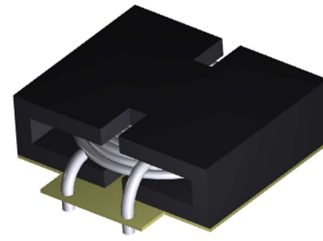


BOTTOM VIEW

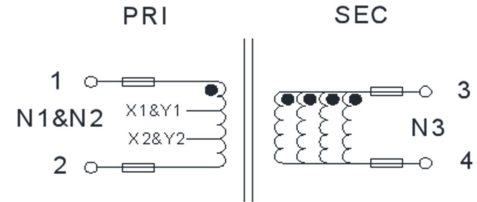


TOP VIEW

## 3. Picture 图片



## 4. Schematic 原理图



● : SAME PHASE

## 6. Electrical Characteristics 电气特性

Electrical Specifications@25°C

Part NO.	Output power(W)	Inductance(uH) 400KHz,1V	Lk(uH)MAX 400KHz,1V	Turns Ratio 20KHz,1V	DCR (mΩ MAX)		HI-POT(VAC) 5mA/3S
S25213A-0	3600	3-4	3-4	(N1&N2):N3	1-2	3-4	PRI -SEC
		4.0~5.0	0.1	1:0.4	7.5	1.7	2000

## 7. Product Superiority 产品优势

- 体积减小: 10%
- 整体高度: 降低 5mm
- 漏感减少: 40%
- 效率提升: 15%
- 损耗减少: 30%